



GOOD MORNING
Have Good Trading Day

FRIDAY



Price is what you pay.
Value is what you get.

- Warren Buffet



MARKET PLUSE

INDIAN INDICES

NAME	CMP	NET CH.	%
SENSEX	26838	-201	-0.75
NIFTY	8111	-59	-0.73

INDIAN ADR'S

SYMBOL	CLOSE	GAIN/ LOSS %
DRREDDY	64.91	+3.13
HDFCBANK	62.24	-1.32
ICICIBK	8.66	-0.92
INFY	18.29	-1.67
TATAMOTOR	29.58	-0.14
WIPRO	12.37	-0.56

FII AND MF ACTIVITY

SYMBOL	In Crs.
FIIs Eq (Provisional)	174.12
FIIs Index Future	-47.814
FIIs Index Options	2087.6
FIIs Stock Future	-997.741
FIIs Stock Options	3.4833
DII's Eq (Provisional)	-299.20

CURRENCY

RBI RATE	29-OCT-2015
RUPEE - \$	65.1515
EURO	71.2497
YEN 100	53.9300
GBP	99.3626

MARKET PLUSE

GLOBAL INDICES

NAME	CMP	NET CH.	%
DOW	17755	-23	-0.13
NASDAQ	5074	-21	-0.42
NIKKEI	18907	-28	-0.15
HANG SENG	22710	-109	-0.48
SGX NIFTY	8136	+2	+0.02

WORLD COMMODITIES

FUTURE	U\$\$	CHANGES
CRUDE	45.85	-0.21
NATURAL GAS	2.251	-0.006
GOLD	1146.8	-0.5
SILVER	15.605	+0.055
COPPER	2.3285	+0.0075

WORLD EVENTS

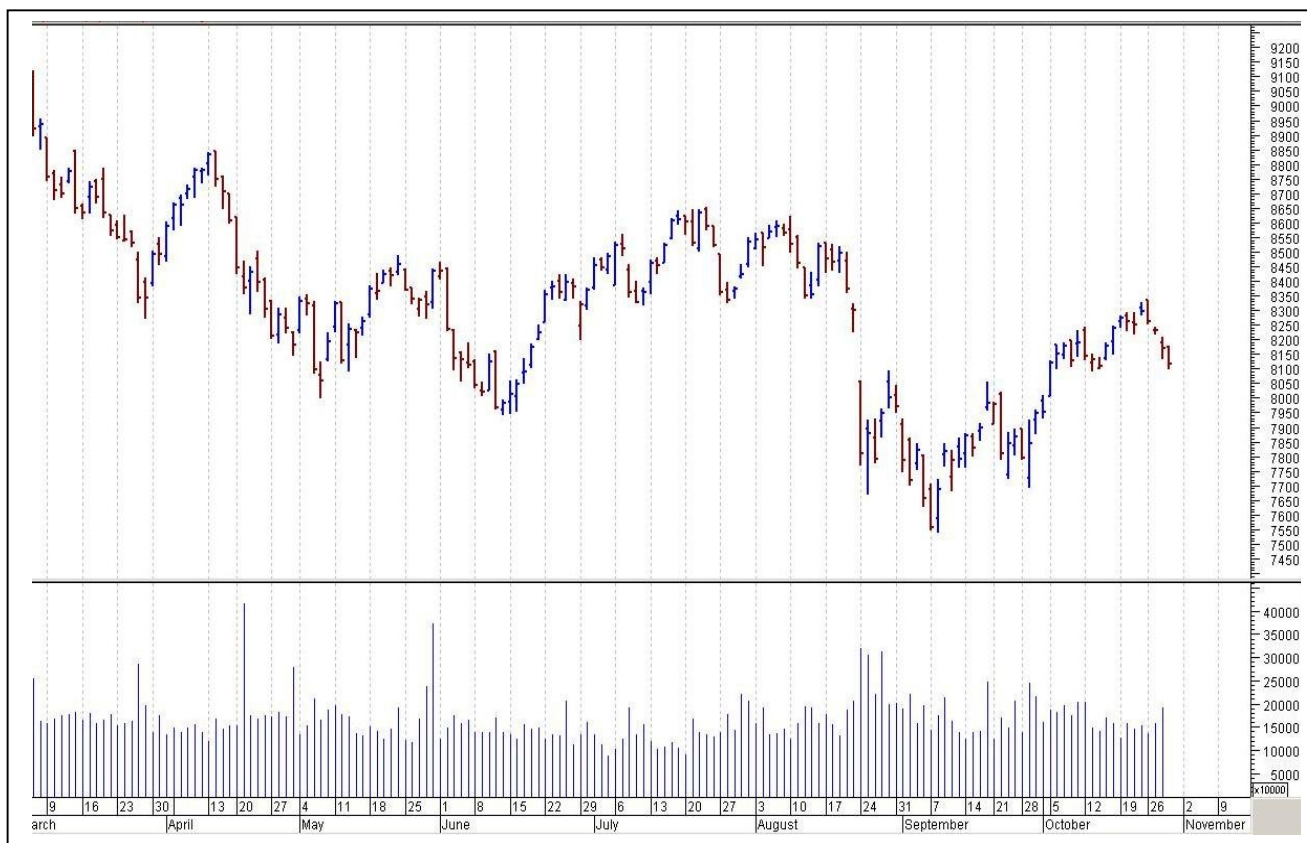
- US: Employment Cost Index q/q
- UK: GfK Consumer Confidence

TOP STORY

- Nestle India Q3 Net Profit At `124.2 Cr Vs `311.3 Cr (YoY) Total Income At `1,742.4 Cr Vs `2,570.4 Cr (YoY)
- GIC Housing Q2 Net Profit At `29.8 Cr Vs `25.8 Cr (YoY) Total Income At `215.6 Cr Vs `178.7 Cr (YoY)
- BEL Q2 Net Profit At `206.7 Cr Vs `147 Cr (YoY) Total Income At `1,467.7 Cr Vs `1,294 Cr (YoY)
- Grasim Q2 Net Profit Up 13% At `338.2 Cr (YoY) Total Income Up 14.9% At `1,838 Cr (YoY)
- Dr Reddy's Q2 Cons Net Profit At `722 Cr Vs `574.1 Cr (YoY) Cons Total Income At `3,989 Cr Vs `3,587.8 Cr (YoY)
- Sonata Software to acquire IBIS for \$14mn (BS)
- Polaris Gets Board Approval To Hive Off Co's BPO Business
- HCL Tech Acquires CRM Services Provider PowerObjects
- Cipla To Sell Its Entire 25% Stake In Biomab Holding, Hong Kong For \$25 m



NIFTY CHART



MARKET COMMENTARY

Indian equity markets truly depicted the choppiness of F&O expiry session on Thursday and after a cautious start extended their southward journey to close with a cut of around three fourth of a percent. Final hour of trade proved to be the curse for the markets and bourses settled below their crucial 26,900 (Sensex) and 8,150 (Nifty) bastions. Sentiments remained downbeat after US Fed in a direct reference put in play a rate hike at its next policy meeting in December. For today's trade Nifty likely to trade in the range between 8130 - 8140 in the upper side and 8090 – 8070 in the lower side.

MARKET LEVELS

	CMP	SUPPORT LEVELS				RESISTANCE LEVELS			
NIFTY	8111	8090	8070	8050	8040	8130	8140	8160	8190
USDINR	65.6	65.55	65.45	65.4	65.3	65.65	65.7	65.85	65.9



FUTURES CORNER

SCRIPS	CLOSE	SUPPORT	TARGET		REMARKS
		STOP LOSS	T1	T2	
SUNTV (SELL)	379.5	384	372	368	TRADING CALL
JUBLFOOD (SELL)	1489.45	1498	1474	1458	TRADING CALL
DIVISLAB	1120.95	1112	1135	1148	TRADING CALL

EQUITY CORNER

SCRIPS	CLOSE	SUPPORT	TARGET		REMARKS
		STOP LOSS	T1	T2	
PFOCUS	54.35	52	56.5	58	TRADING CALL
--	--	--	--	--	--

DELIVERY BASED CALL / INVESTMENT CALL

SCRIPS	CMP	SUPPORT	TARGET		REMARK
		STOP LOSS	T1	T2	

BULK DEALS (BSE)

SCRIP	CLIENT NAME	BUY/SELL	QUANTITY	PRICE
EPCIN	KUWAIT INVESTMENT AUTHORITY	S	172,451	163.19
TDPOWERSYS	HDFC MUTUAL FUND	S	300,000	278

BULK DEALS (NSE)

SCRIP	CLIENT NAME	BUY/SELL	QUANTITY	PRICE
TDPOWERSYS	HDFC MUTUAL FUND A/C HDFC INFRASTRUCTURE FUND	SELL	185000	278
TDPOWERSYS	HDFC MUTUAL FUND A/C HDFC PRUDENCE FUND	SELL	300000	278

SCRIP'S IN F&O BAN

(To resume for normal trading below 80% of market wide limit required)

NIL



NIFTY 50 STOCKS: SUPPORT & RESISTANCE						
Symbol	Close	Support 1	Support 2	Pivot Point	Resistance1	Resistance2
ACC	1385.4	1375.1	1364.8	1386.30	1396.60	1407.80
ADANIPORTS	300.1	297.7	295.3	300.53	302.92	305.73
AMBUJACEM	207.5	203.4	199.4	206.72	210.73	214.02
ASIANPAINT	829.4	821.6	813.8	828.18	835.97	842.58
AXISBANK	469.0	461.9	454.8	474.13	481.22	493.48
BAJAJ-AUTO	2577.3	2560.0	2542.6	2579.98	2597.32	2617.33
BANKBARODA	162.5	160.9	159.4	163.32	164.83	167.22
BHARTIARTL	355.4	350.0	344.5	354.45	359.90	364.40
BHEL	203.3	199.2	195.1	206.33	210.42	217.58
BOSCHLTD	21067.5	20942.6	20817.8	21124.82	21249.63	21431.82
BPCL	879.1	866.5	853.9	887.75	900.35	921.60
CAIRN	153.9	152.0	150.1	154.70	156.60	159.30
CIPLA	691.6	685.7	679.9	695.32	701.13	710.72
COALINDIA	321.8	317.7	313.6	324.85	328.95	336.10
DRREDDY	4221.4	4123.0	4024.7	4181.52	4279.83	4338.32
GAIL	313.0	303.8	294.5	315.25	324.50	336.00
GRASIM	3672.0	3643.7	3615.3	3671.33	3699.67	3727.33
HCLTECH	875.9	871.0	866.2	878.12	882.98	890.07
HDFC	1264.7	1253.6	1242.5	1269.62	1280.68	1296.72
HDFCBANK	1103.6	1097.5	1091.5	1106.02	1112.03	1120.52
HEROMOTOCO	2626.7	2607.5	2588.3	2622.38	2641.57	2656.48
HINDALCO	83.3	82.5	81.8	83.75	84.50	85.75
HINDUNILVR	801.5	794.4	787.4	806.22	813.23	825.02
ICICIBANK	271.5	269.8	268.1	272.03	273.72	275.98
IDEA	141.5	140.2	138.9	141.32	142.63	143.77
INDUSINDBK	914.5	907.4	900.3	915.60	922.70	930.90
INFY	1145.1	1135.4	1125.8	1145.67	1155.28	1165.52
ITC	350.0	346.1	342.1	351.03	354.97	359.93
KOTAKBANK	664.0	658.2	652.5	666.62	672.38	680.77
LT	1470.8	1459.6	1448.4	1477.77	1488.93	1507.12
LUPIN	1920.3	1905.9	1891.5	1920.80	1935.20	1950.15
M&M	1227.8	1215.5	1203.3	1226.27	1238.53	1249.27
MARUTI	4439.6	4401.7	4363.8	4457.12	4494.98	4550.42
NTPC	128.0	126.4	124.9	128.82	130.33	132.72
ONGC	250.9	248.9	246.9	252.05	254.05	257.25
PNB	128.9	127.4	125.9	129.62	131.08	133.32
POWERGRID	128.2	126.0	123.9	128.32	130.43	132.72
RELIANCE	941.0	935.6	930.3	940.32	945.68	950.37
SBIN	237.0	235.0	233.1	238.40	240.35	243.75
SUNPHARMA	878.9	869.0	859.0	885.48	895.42	911.93
TATAMOTORS	391.2	384.7	378.2	390.75	397.25	403.30
TATAPOWER	69.7	68.8	67.9	69.38	70.27	70.88
TATASTEEL	247.6	244.4	241.2	247.92	251.13	254.67
TCS	2495.4	2478.5	2461.6	2506.93	2523.82	2552.28
TECHM	549.0	543.9	538.8	550.23	555.32	561.63
ULTRACEMCO	2914.8	2880.3	2845.7	2912.13	2946.67	2978.53
VEDL	107.1	105.7	104.2	106.80	108.25	109.40
WIPRO	574.6	570.4	566.3	575.17	579.33	584.07
YESBANK	743.6	718.4	693.1	732.98	758.22	772.83
ZEEL	415.7	412.6	409.5	417.77	420.88	426.07



CORPORATE ACTION / BOARD MEETINGS

NIL

BOARD MEETINGS

COMPANY NAME	DATE	PURPOSE	RS. PER SH.
ASHIMASYN	30-Oct-15	Rights : 24:10 At Par	
WELSPUNIND	30-Oct-15	Dividend	6.5
VEDL	30-Oct-15	Dividend	3.5
SSWL	30-Oct-15	Dividend	1.5
GODREJCP	30-Oct-15	Dividend	1
IBULHSGFIN	2-Nov-15	Dividend	9
TRIDENT	2-Nov-15	Dividend	0.3
IBVENTURES	2-Nov-15	Dividend	0.5
DHFL	2-Nov-15	Dividend	3
TIRUMALCHM	3-Nov-15	Dividend	4
ICIL	3-Nov-15	Dividend	1
SRTRANSFIN	5-Nov-15	Dividend	
MUTHOOTFIN	5-Nov-15	Dividend	
COLPAL	5-Nov-15	Dividend	
SHREECEM	5-Nov-15	Annual General Meeting/ Dividend	14
DABUR	5-Nov-15	Dividend	
RSYSTEMS	5-Nov-15	Dividend	
MPSLTD	5-Nov-15	Dividend	7
HARITASEAT	6-Nov-15	Dividend	
NAVINFLUOR	6-Nov-15	Dividend	10
AEGISCHEM	6-Nov-15	Dividend	
MARICO	9-Nov-15	Dividend	

NEWS & RUMOURS:

- Gold (Spot Dollar) major support = \$1125/\$1101 & Resistance = \$1184/\$1213.
- Crude oil range->\$41 to \$51.
- Global Stocks Fall as Fed Dents Emerging Markets; Bonds Decline: - Revived prospects for an increase in U.S. interest rates this year rippled across financial markets, as the best monthly rally in equities since 2011 stalled and the strongest dollar in two months dented commodities and emerging assets.
- Natural gas futures surge 3% after bullish weekly storage data: - Natural gas futures pushed higher to move further away from the lowest level in more than three years on Thursday after data showed natural gas supplies rose less than expected last week.
- Gold sinks more than \$20 after U.S. GDP data, Fed: - Gold prices plunged sharply to a more than two-week low on Thursday, after data showed the U.S. economy grew mostly in line with expectations in the third quarter and as the Federal Reserve signaled that a December rate hike was still on the table.
- Copper futures slump as hawkish Fed, China concerns weigh: - Copper prices declined on Thursday, as the Federal Reserve left open the possibility of a rate hike in December and amid persistent worries about future demand from top consumer China.
- Oil futures waver as glut concerns remain: - Oil futures swung between gains and losses on Thursday, amid uncertainty about how quickly the global glut of crude is set to shrink.

TRENDS & OUTLOOK – DATE: 30- Oct- 2015

PRECIOUS METALS:

COMMDITY (MCX)	S2	S1	PIVOT POINT	R1	R2
GOLD (Dec)	26165	26420	26725	27090	27359
SILVER (Dec)	34700	35500	36900	37999	39040

BASE METALS

COMMDITY (MCX)	S2	S1	PIVOT POINT	R1	R2
COPPER (Nov)	330	334	340	346	352
ZINC (Oct)	106.45	108.50	111.25	113.20	116.55
LEAD (Oct)	107.10	109.50	111.90	114.55	117.30
NICKEL (Oct)	648	666	682	699	716

ENERGY

COMMDITY (MCX)	S2	S1	PIVOT POINT	R1	R2
CRUDE OIL (Nov)	2820	2910	3015	3165	3255
NATURAL GAS (Nov)	142	147	154	159	165

DATE TALKS : TODAY'S ECONOMIC DATA :

Monetary Policy Statement of JPY, BOJ Outlook Report, BOJ Press Conference, German Retail Sales, Employment Cost Index, Core PCE Price Index, Personal Spending, Personal Income, Chicago PMI, FOMC Member Williams Speaks, Revised UoM Consumer Sentiment, Revised UoM Inflation Expectations.



Registered Office

Indira House, 3rd Floor, 5 Topiwala Lane,
Opp. Lemington Road Police Station, Grant Road (East), Mumbai - 400007.

Corporate Office

'Ramavat House' E-15, Saket Nagar, Indore - 452018 (M.P.)

Customer Care

Tel: +91-731-4097170/ 71/ 72/ 73/ 74 M. +91 93031 72345

Email: customercare@indiratrade.com www.indiratrade.com



INSTITUTIONAL DEALING UNIT

Africa House, 5, Topiwalla Lane, Lamington Road, Mumbai, 400007

Tel: +91 22 30080678 Fax : +91 22 23870767 Email : ie@indiratrade.com

Disclaimer

This report is for private circulation within the Indira Group. This report is strictly confidential and for information of the selected recipient only and may not be altered in any way, transmitted to, copied or distributed, in part or in whole, to any other person or to the media or reproduced in any form. This report should not be construed as an offer or solicitation to buy or sell any securities or any interest in securities. It does not constitute a personal recommendation or take into account the particular investment objectives, financial situations, or any such factor. The information, opinions estimates and forecasts contained here have been obtained from, or are based upon, sources we believe to be reliable, but no representation of warranty, express or implied, is made by us to their accuracy or completeness. Opinions expressed are our current opinions as of the date appearing on this material only and are subject to change without notice.